

# TAME Typology of Amazonia

Dr. Neele Müller  
University of Marburg

August 3rd 2015  
ALT 11, Albuquerque

Is there a geographical typological Andean-Amazonian  
split for TAME?



- "[m]ost verbal categories (e.g. tense, aspect, modality, direction) are expressed through optional suffixes" (Dixon & Aikhenvald 1999, 9).
- but Dryer (handout ALT11):

	SA	all Lgs
<b>weak TASuff</b>	18	215
<b>strong TASuff</b>	38	242
<b>weak TAPref</b>	5	76
<b>strong TAPref</b>	3	95

- SA: 56 Suff, 8 Pref (7/1)
- global: 475 Suff, 171 Pref (2.7/1)

- geographical and cultural split into Andean and Amazonian -> reflected in language (e.g. Adelaar 2008)
- pro split: Dixon & Aikhenvald (1999), rejected by Payne (2001)
- problems: no unified sample (genealogical or geographical), no consistent use of "Amazonian" or "Andean" (geographical, cultural, certain lg. families)
- Everett (2010) mixes geography and genealogy: Amazon and its tributaries + Orinoco + river systems of Guiana, because of Cariban



80 South American Indigenous  
languages (SAILs)

27 families

13 unclassified/ isolates

35 morpho-syntactic TAME  
features (Affixes only) (see Müller 2013)

- TAME: Tense, Aspect, Modality, Evidentiality = 35 features
- Tense: 5 features (two dependent, 3 independent), e.g.
  - PRESENT
- Aspect: 8 features (all independent), e.g.
  - HABITUAL
- Modality: 15 features (all independent), e.g.
  - DUBITATIVE
- Evidentiality: 7 features (all independent), e.g.
  - VISUAL

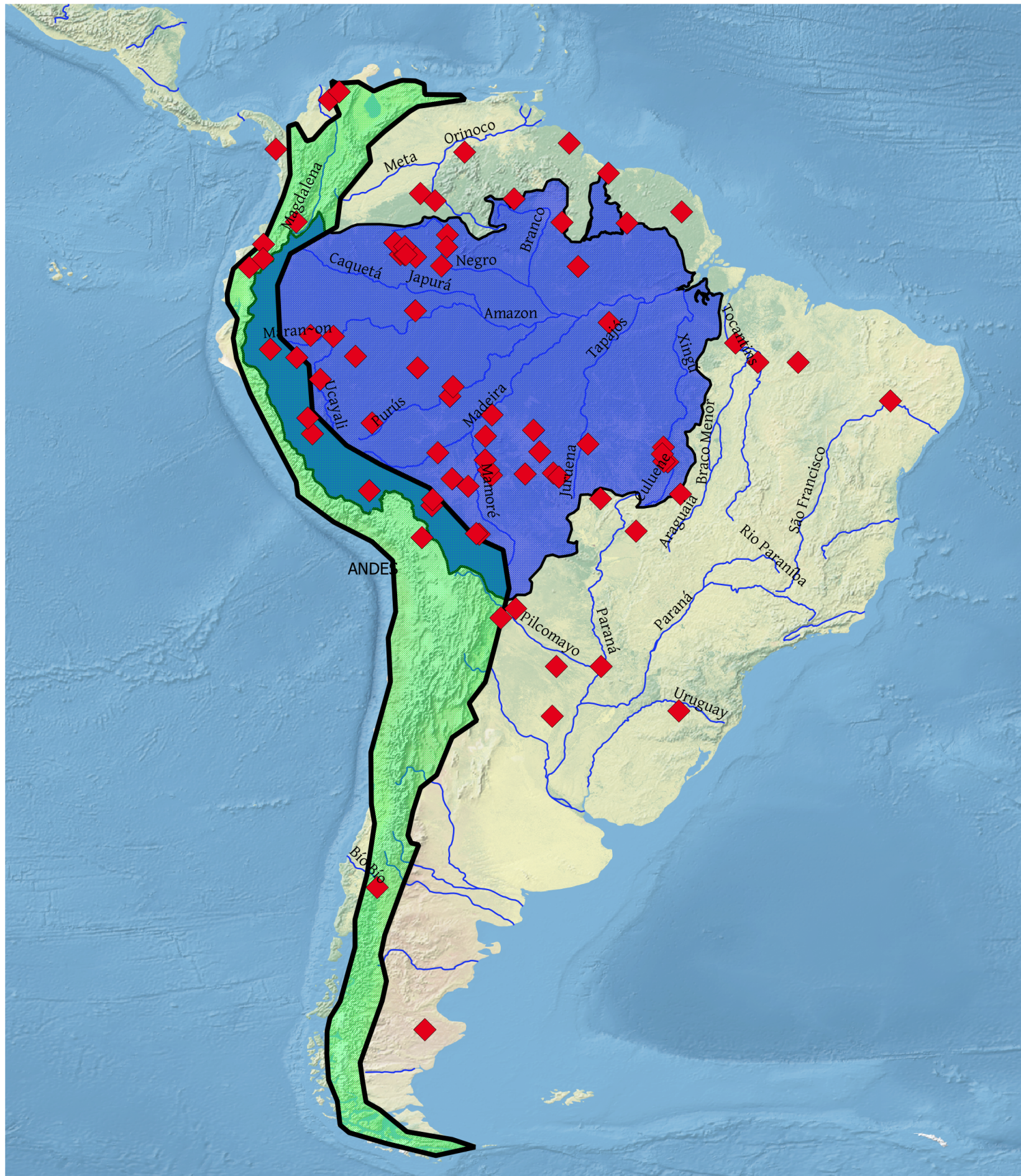


# Amazon watershed by the World Research Institute - Watersheds of the World

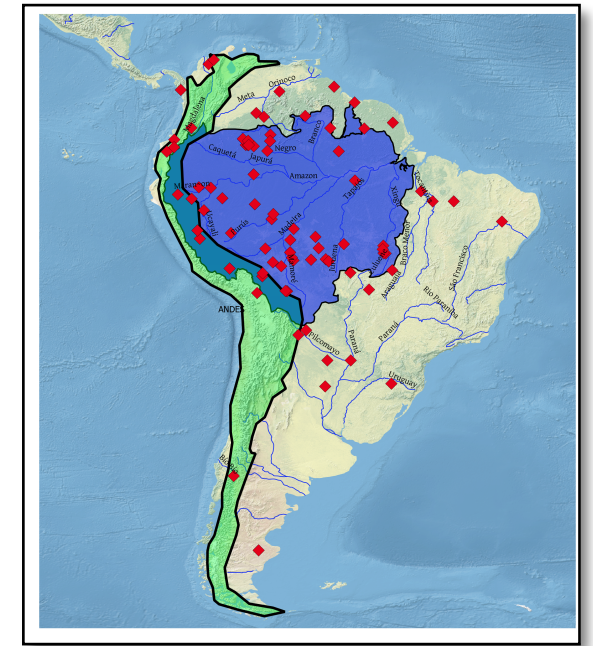
Andean range,  
continent and river  
systems by:



language  
coordinates from  
Hammarström et al.  
2015 (Glottolog)



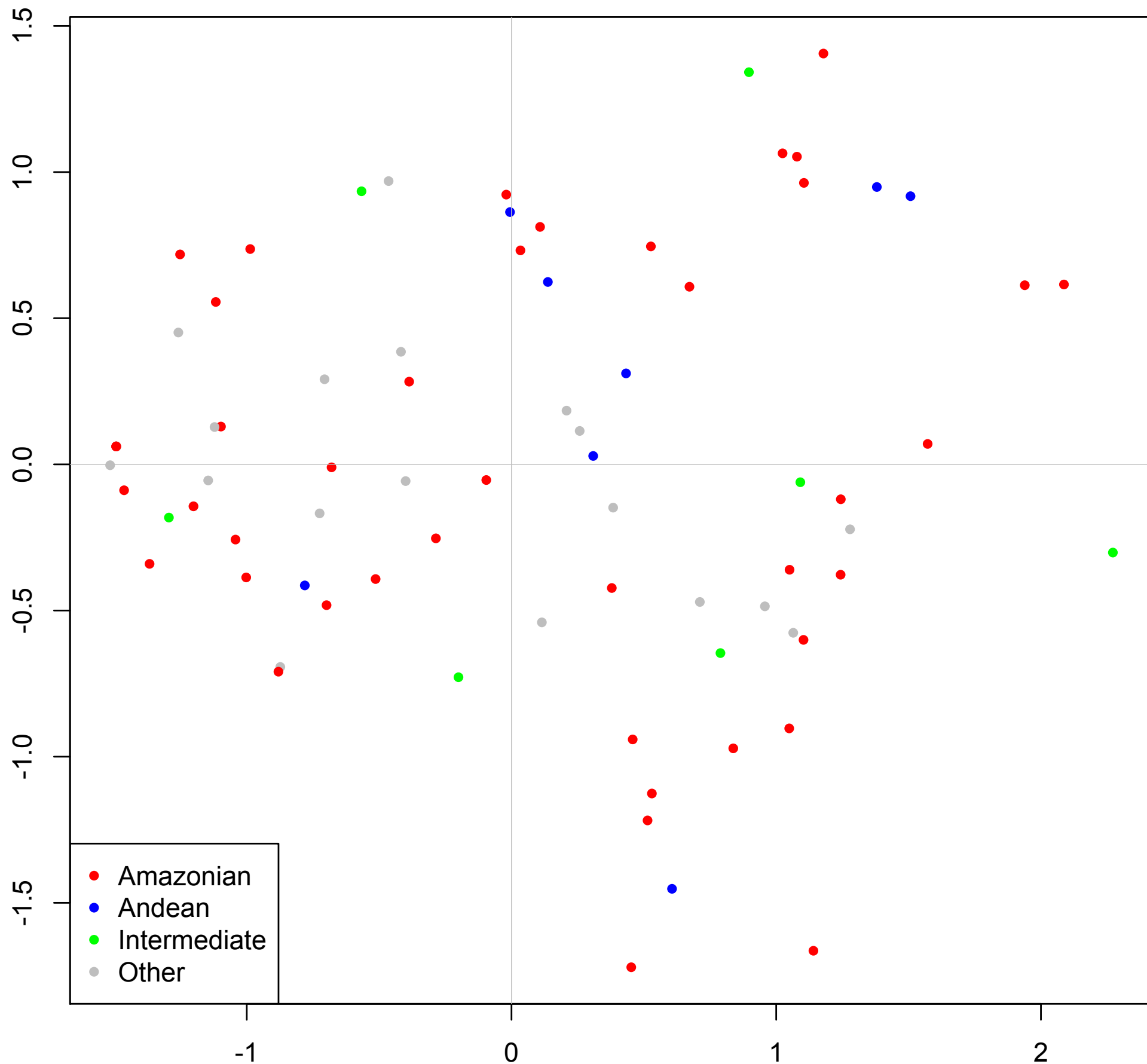




- AmaLangs: 43
- AndeLangs: 8 (Aymara, Wichi, Mapuche, Tsafiki, Awa Pit, Imbabura Quechua, Nasa Yuwe, Ika)
- InterLangs: 7 (Leko, Mosetén, Cuzco Quechua, Yanesha, Huallaga Quechua, Munichichi, Aguaruna)
- Neither: 22

(Total: 80)

- Each language tested for each of the 35 features (Affix or unmarked) according to geographical distribution
- No feature has an exclusive geographical Andean - Amazonian split!





- max. difference between AmaLangs and AndeLangs  
(Pearson's Chi-squared Test):

1. HORTATIVE

2. CONTINUATIVE

3. PURPOSIVE

...

1. HORTATIVE

	AMA	AND	INT	none
Unmarked	29	2	4	21
Affix	14	6	3	1

2. CONTINUATIVE

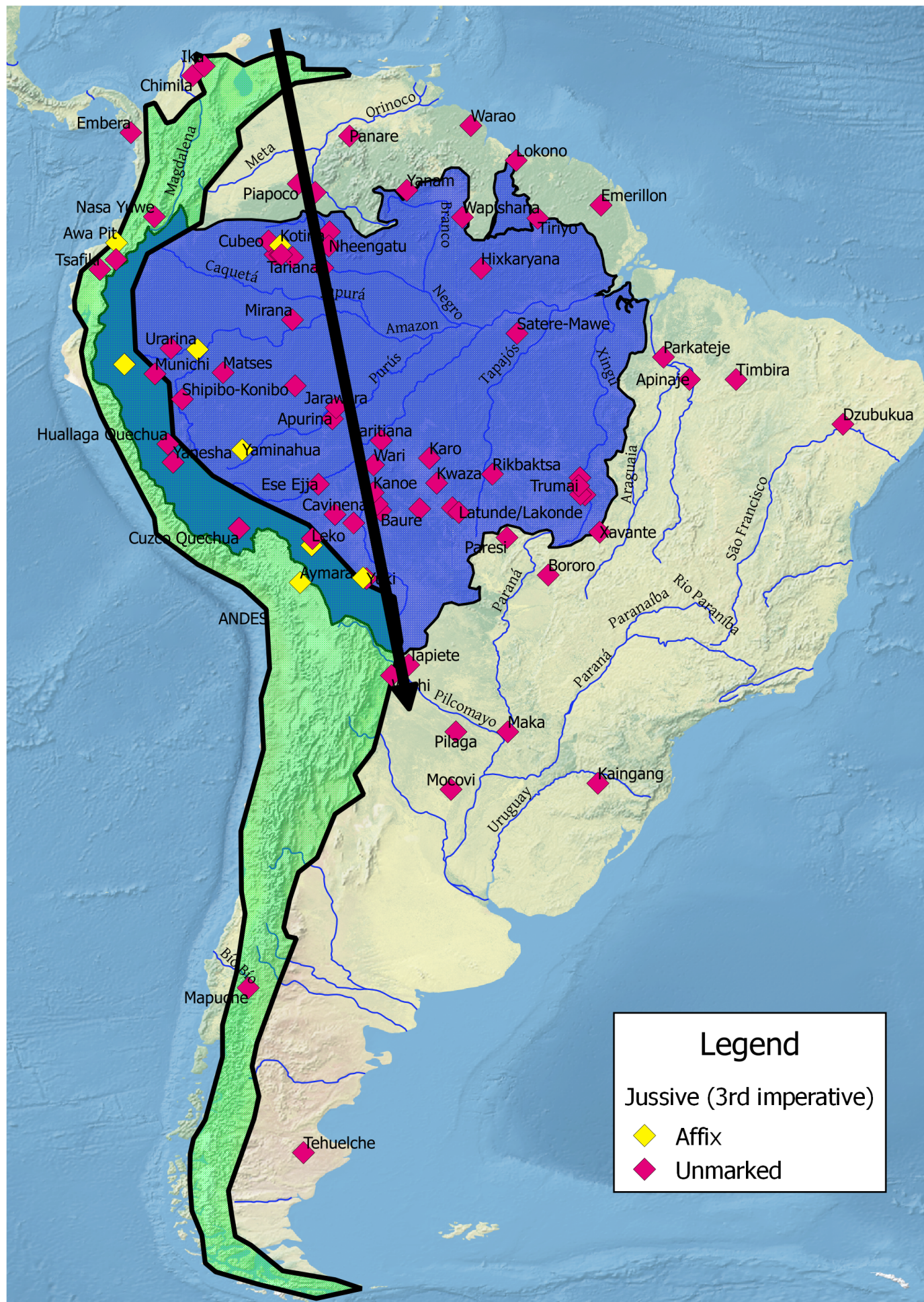
	AMA	AND	INT	none
Unmarked	28	2	3	15
Affix	15	6	4	7

3. PURPOSIVE

	AMA	AND	INT	none
Unmarked	34	4	4	18
Affix	9	4	3	4

- some clusters / peculiar areal distributions, e.g.:
  - Modal categories:
    - COMMAND features:
      - "1 marker for imperative for more than one person / number"
      - JUSSIVE (3rd p.)
      - mild imperative
    - DUBITATIVE
    - FRUSTRATIVE
  - Evidential categories:
    - SECONDHAND
    - INFERRED
    - ASSUMED



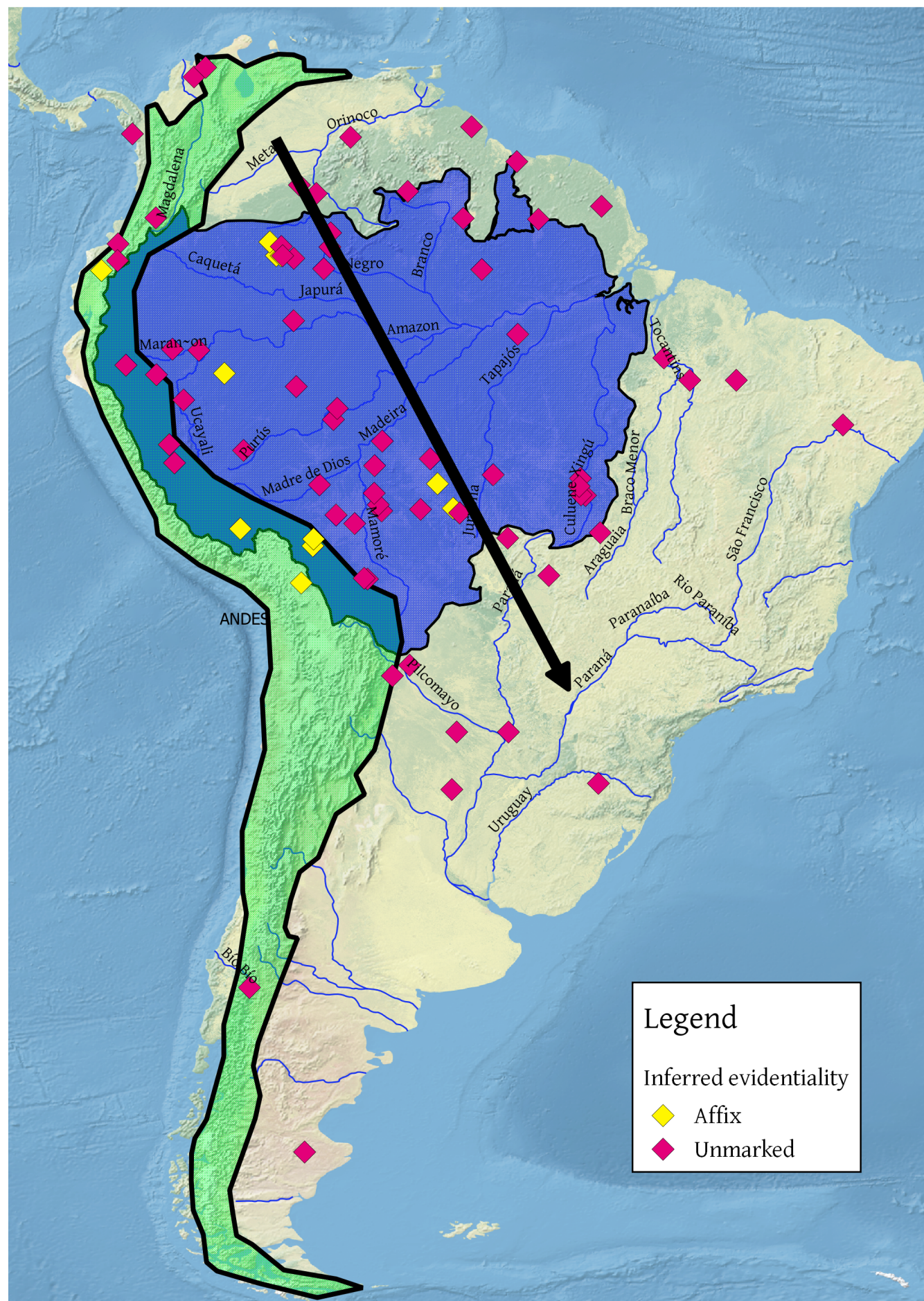


AndeLangs: Awa Pit, Aymara

AmaLangs: Kotiria, Cocama-Cocamilla, Yaminahua, Yurakare

InterLangs: Leko, Aguaruna



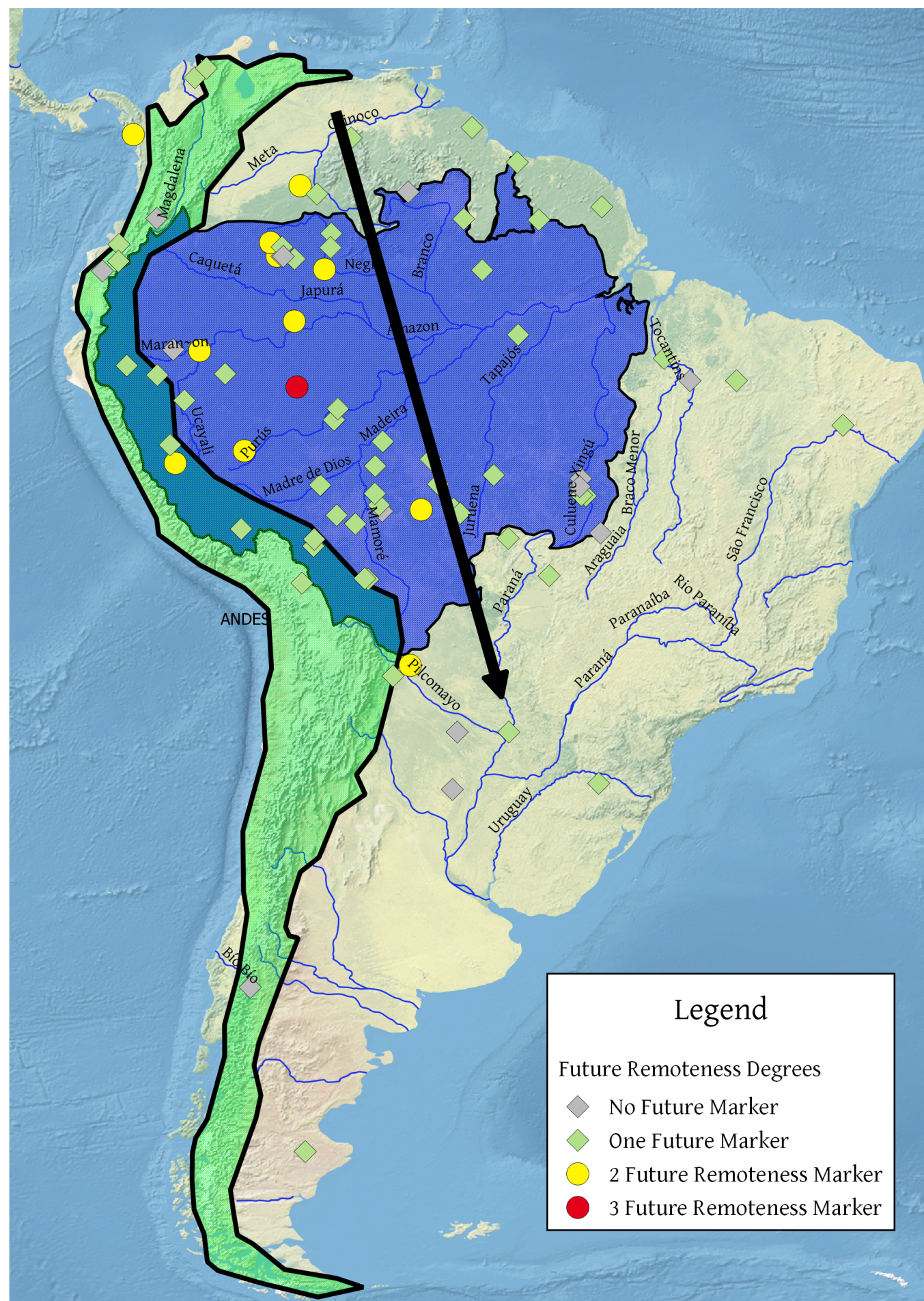


AndeLangs: Tsafiki, Aymara

AmaLangs: Sabanê, Kwaza, Matses, Cubeo, Hup, Tucano

InterLangs: Leko, Mosetén, Cuzco Quechua





AndeLangs: none

AmaLangs: Cubeo, Hup, Dâw,  
Miraña, Cocama-Cocamilla,  
Yaminahua, Mekens

InterLangs: Yanesha



Is there a geographical typological Andean-Amazonian  
split for TAME?



No.

East-West split for e.g. Future Remoteness, Inferred Evidentiality,  
and Jussive.

