

Concerto ex G

con
Cembalo obbligato
Violino Primo
Violino Secondo
et
Basso.

op 7 no. 3

Thema



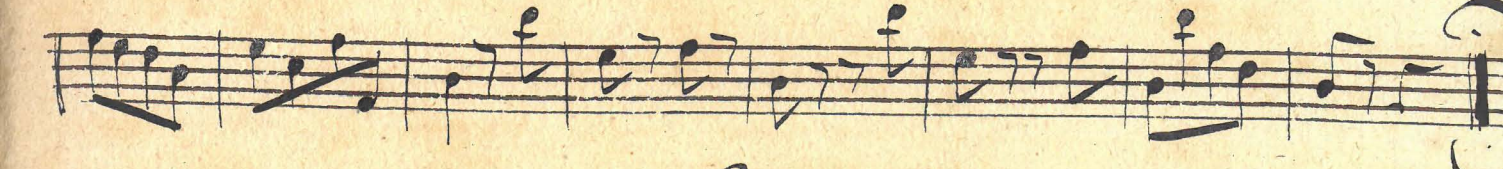
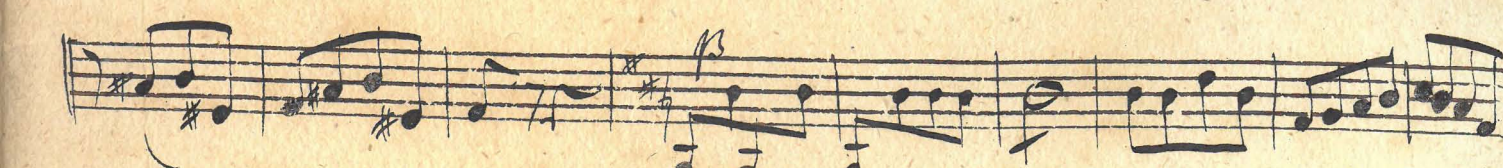
del Sigre Bach a London

Allegro con Spirito Violoncello.

Tutti



Allegretto $\frac{2}{4}$ *p*



Il Fine

Violino Primo.

Allegro con spirito Violino Primo.

This page contains a handwritten musical score for the first violin part, titled "Allegro con spirito Violino Primo." The score is written on 14 staves. The notation includes a variety of rhythmic values such as eighth, sixteenth, and thirty-second notes, as well as rests and dynamic markings. Performance instructions like "2" and "4" are placed above certain notes, likely indicating fingerings or bowing techniques. The manuscript is written in dark ink on aged, slightly yellowed paper.

8

Handwritten musical notation on five staves. The notation includes various note values, rests, and dynamic markings. The paper shows signs of age and staining.

Allegretto

Handwritten musical notation on five staves, starting with the tempo marking *Allegretto*. The notation includes various note values, rests, and dynamic markings.

Tutti

Handwritten musical notation on five staves, starting with the tempo marking *Tutti*. The notation includes various note values, rests, and dynamic markings. The paper shows signs of age and staining.

This image shows a page of handwritten musical notation on aged, yellowed paper. The notation is arranged in ten horizontal staves. The first staff begins with a treble clef and a common time signature (C). The music is written in a cursive, historical style, featuring a variety of note values including minims, crotchets, and quavers. There are several instances of beamed sixteenth notes and groups of eighth notes. The notation includes various ornaments and slurs. A key signature change to one sharp (F#) is visible in the second staff. The word "tutti" is written in a cursive hand in the sixth staff. The paper shows signs of age, with some staining and discoloration, particularly in the lower half of the page where the staves are mostly empty.

Violino Secondo.

Allegro con spirito Violino Secondo

This is a handwritten musical score for the second violin part of a piece. The title is "Allegro con spirito Violino Secondo". The score consists of 14 staves of music. The notation includes various rhythmic values, accidentals, and dynamic markings. Key annotations include:

- "Solo" written at the end of the third staff and at the beginning of the eighth staff.
- "Tutti" written above the fourth staff.
- The number "4" written at the beginning of the eighth and tenth staves.
- A "10" written above the tenth staff.
- Dynamic markings such as "p" (piano) and "f" (forte) are scattered throughout the score.
- There are several slurs and phrasing marks over the notes.

The paper shows signs of age, with some staining and discoloration.

Handwritten musical notation on two staves. The top staff features a treble clef and a key signature of one sharp (F#). The bottom staff features a bass clef. The music consists of various note values, including eighth and sixteenth notes, and rests.

Rondeau Allegro

Handwritten musical score for 'Rondeau Allegro'. The score is written on ten staves. The first staff begins with a treble clef, a key signature of one sharp (F#), and a 2/4 time signature. The music is characterized by rhythmic patterns and dynamic markings. A '4 Tutti' marking is present on the fourth staff, and a 'Solo' marking is on the tenth staff. The notation includes various note values, rests, and articulation marks.

Handwritten musical notation on three staves. The notation includes various note values, rests, and dynamic markings. The word "Tutti" is written above the second staff. The music concludes with a double bar line and a final note on the third staff.

Tutti

Allegro con spirito **Cembalo obbligato.**

Musical staff with treble clef, key signature of two sharps (F# and C#), and 4/4 time signature. The notation includes a series of quarter notes and eighth notes, with some notes marked with '4' above them.

Musical staff with a grand staff (treble and bass clefs). The notation features a melodic line in the treble clef and a bass line in the bass clef, with various rhythmic patterns and accidentals.

Musical staff with a grand staff. The notation includes a complex rhythmic pattern with many sixteenth notes and some chords, with '6' and '4' markings above certain notes.

Musical staff with a grand staff. The notation shows a melodic line in the treble clef and a bass line in the bass clef, with some chords and accidentals.

Musical staff with a grand staff. The notation features a melodic line in the treble clef and a bass line in the bass clef, with some chords and accidentals.

Musical staff with a grand staff. The notation includes a melodic line in the treble clef and a bass line in the bass clef, with some chords and accidentals.

Musical staff with a grand staff. The notation shows a melodic line in the treble clef and a bass line in the bass clef, with some chords and accidentals. The word *Tutti* is written above the staff.

Handwritten musical notation on a five-line staff. The system begins with a treble clef, a key signature of one sharp (F#), and a 3/4 time signature. The notation includes various note values, rests, and a complex, scribbled-out section on the right side.

Handwritten musical notation on a five-line staff. The system begins with a treble clef and a key signature of one sharp (F#). The notation includes various note values and rests.

Handwritten musical notation on a five-line staff. The system begins with a treble clef and a key signature of one sharp (F#). The notation includes various note values and rests.

Handwritten musical notation on a five-line staff. The system begins with a treble clef and a key signature of one sharp (F#). The notation includes various note values and rests.

Handwritten musical notation on a five-line staff. The system begins with a treble clef and a key signature of one sharp (F#). The notation includes various note values and rests.

Handwritten musical notation on a five-line staff. The system begins with a treble clef and a key signature of one sharp (F#). The notation includes various note values and rests.

Handwritten musical notation on a five-line staff. The system begins with a treble clef and a key signature of one sharp (F#). The notation includes various note values and rests.

Handwritten musical notation on two staves. The top staff contains a melodic line with eighth and sixteenth notes. The bottom staff contains a bass line with quarter and eighth notes.

Handwritten musical notation on two staves. The top staff continues the melodic line with various rhythmic values. The bottom staff continues the bass line.

Handwritten musical notation on two staves. The top staff features a complex melodic passage with many beamed notes. The bottom staff has a bass line with some rests.

Handwritten musical notation on two staves. The word "Tutti" is written in cursive above the top staff. The notation includes a treble clef and a key signature of one sharp.

Handwritten musical notation on two staves. The top staff has a treble clef and a key signature of one sharp. The bottom staff has a bass clef and a key signature of one sharp.

Solti Solo.



Tutti

Handwritten musical notation on a single staff with a treble clef. The notation includes a series of eighth notes followed by a melodic line. A "6 4 3" marking is written above the staff.

Handwritten musical notation on two staves. The upper staff has a treble clef and contains a melodic line with various note values. The lower staff has a bass clef and contains a bass line with many beamed notes.

Handwritten musical notation on two staves. The upper staff has a treble clef and contains a melodic line. The lower staff has a bass clef and contains a bass line with many beamed notes.

Handwritten musical notation on two staves. The upper staff has a treble clef and contains a melodic line with many beamed notes. The lower staff has a bass clef and contains a bass line with many beamed notes.

Handwritten musical notation on two staves. The upper staff has a treble clef and contains a melodic line with many beamed notes. The lower staff has a bass clef and contains a bass line with many beamed notes.

Handwritten musical notation on two staves. The upper staff has a treble clef and contains a melodic line with many beamed notes. The lower staff has a bass clef and contains a bass line with many beamed notes.

Handwritten musical notation on two staves. The upper staff has a treble clef and contains a melodic line with many beamed notes. The lower staff has a bass clef and contains a bass line with many beamed notes. The notation ends with a large, decorative flourish.

Rondo Allegretto.

This page contains a handwritten musical score for a piece titled "Rondo Allegretto." The score is written on aged, yellowed paper and consists of several systems of staves. The notation includes treble and bass clefs, a key signature of one sharp (F#), and a 4/4 time signature. The music is characterized by frequent sixteenth-note passages and complex rhythmic patterns. Above the first staff, there are several numbers: 2, 1:4, 5, 4 3 4, 6, 6 3 6, 6, and 4 2. Above the second staff, the numbers 4 3 4 are visible. The score is densely packed with musical notation, including many beamed sixteenth notes and rests. The handwriting is clear and consistent throughout the piece.

Handwritten musical notation on a five-line staff, featuring a treble clef and a key signature of one sharp (F#). The notation includes a complex melodic line with many beamed notes and rests, and a bass line with fewer notes and rests.

Handwritten musical notation on a five-line staff, featuring a treble clef and a key signature of one sharp (F#). The notation includes a complex melodic line with many beamed notes and rests, and a bass line with fewer notes and rests.

Handwritten musical notation on a five-line staff, featuring a treble clef and a key signature of one sharp (F#). The notation includes a complex melodic line with many beamed notes and rests, and a bass line with fewer notes and rests.

Handwritten musical notation on a five-line staff, featuring a treble clef and a key signature of one sharp (F#). The notation includes a complex melodic line with many beamed notes and rests, and a bass line with fewer notes and rests.

Handwritten musical notation on a five-line staff, featuring a treble clef and a key signature of one sharp (F#). The notation includes a complex melodic line with many beamed notes and rests, and a bass line with fewer notes and rests.

Handwritten musical notation on a five-line staff, featuring a treble clef and a key signature of one sharp (F#). The notation includes a complex melodic line with many beamed notes and rests, and a bass line with fewer notes and rests.

Handwritten musical notation on a five-line staff, featuring a treble clef and a key signature of one sharp (F#). The notation includes a complex melodic line with many beamed notes and rests, and a bass line with fewer notes and rests.

Forti.

Handwritten musical notation on a five-line staff, featuring a treble clef and a key signature of one sharp (F#). The notation includes a melody line with eighth and sixteenth notes, and a bass line with chords and eighth notes.

Handwritten musical notation on a five-line staff, featuring a treble clef and a key signature of one sharp (F#). The notation includes a melody line with eighth and sixteenth notes, and a bass line with chords and eighth notes.

Handwritten musical notation on a five-line staff, featuring a treble clef and a key signature of one sharp (F#). The notation includes a melody line with eighth and sixteenth notes, and a bass line with chords and eighth notes.

Handwritten musical notation on a five-line staff, featuring a treble clef and a key signature of one sharp (F#). The notation includes a melody line with eighth and sixteenth notes, and a bass line with chords and eighth notes.

Handwritten musical notation on a five-line staff, featuring a treble clef and a key signature of one sharp (F#). The notation includes a melody line with eighth and sixteenth notes, and a bass line with chords and eighth notes.

Handwritten musical notation on a five-line staff, featuring a treble clef and a key signature of one sharp (F#). The notation includes a melody line with eighth and sixteenth notes, and a bass line with chords and eighth notes.

Handwritten musical notation on a five-line staff, featuring a treble clef and a key signature of one sharp (F#). The notation includes a melody line with eighth and sixteenth notes, and a bass line with chords and eighth notes. The piece concludes with a double bar line and a fermata over the final note.

Handwritten musical notation on two staves. The top staff begins with a treble clef and a key signature of one sharp (F#). The bottom staff begins with a bass clef and a 6/6 time signature. The music consists of a series of sixteenth-note runs and chords.

Handwritten musical notation on two staves. The top staff continues with sixteenth-note runs. The bottom staff features a more complex rhythmic pattern with many beamed sixteenth notes.

Handwritten musical notation on two staves. The top staff has a treble clef and a key signature of one sharp. The bottom staff has a bass clef and a 6/6 time signature. The music continues with intricate sixteenth-note passages.

Handwritten musical notation on two staves. The top staff has a treble clef. The bottom staff has a bass clef and a 6/6 time signature. The music is characterized by rhythmic patterns of sixteenth notes.

Handwritten musical notation on two staves. The top staff has a treble clef. The bottom staff has a bass clef and a 6/6 time signature. The music continues with sixteenth-note runs.

Handwritten musical notation on two staves. The top staff has a treble clef and a 6/4 time signature. The bottom staff has a bass clef and a 6/6 time signature. The music concludes with a final cadence.

Il Fine