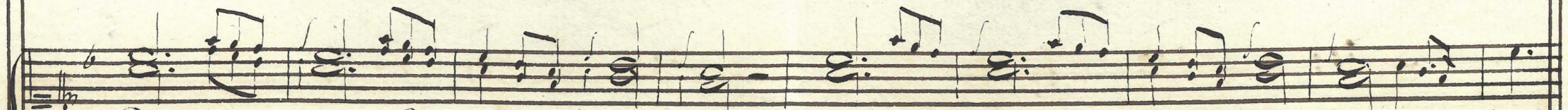


Opera Semiramis  
del Signor Venturino

11

This page contains a handwritten musical score for the opera 'Semiramis' by Venturino. The score is written on six staves, organized into three systems of two staves each. The notation includes various clefs (treble and bass), a common time signature (C), and a key signature of one flat (B-flat). The music features a variety of note values, including eighth and sixteenth notes, as well as rests and ornaments. There are several dynamic markings, including 'L.' (Lento) and 'L. L.' (Lento-Lento), placed above the staves. The score concludes with a double bar line and a final chord marked 'Bel.' (Bellissimo).



*Bel pia-cer fa-rì-a el un cuore quel po-ter a suo talen-to, quando amor*



*gli da tor-mente ri-tor-nar in li-ber-tà — — — — ritornar in*



*libertà — — — — in li-ber-tà ri-tornar in li-ber-tà.*



in li-ber-tà.

in li-ber-tà.

Bel pia-

cer fa-ria d'un cuore, quel po-ter a fuo-ten-to, a suo talen-to

cer fa-ria d'un cuore, quel po-ter a fuo-ten-to, a suo talen-to

quando a-mor gli da ter-mento, ri-tor-nar in li-ber-tà.

quando a-mor gli da ter-mento, ri-tor-nar in li-ber-tà.

Handwritten musical notation for the first system. The vocal line begins with a treble clef, a key signature of one flat (B-flat), and a 6/8 time signature. It contains several measures of music, including a second ending marked '2o.' with a repeat sign. The piano accompaniment is on a grand staff with a bass clef and a 6/8 time signature.

in li-ber-tà, bel pic-

Handwritten musical notation for the piano accompaniment of the first system, consisting of a single line with a bass clef and a 6/8 time signature.

Handwritten musical notation for the second system. The vocal line continues with a treble clef, a key signature of one flat, and a 6/8 time signature. It includes a second ending marked '2o.' with a repeat sign. The piano accompaniment is on a grand staff with a bass clef and a 6/8 time signature.

cer, que nel ca-mor gli cla tor-mento, quel po-ter ci fu o ta-lento, ri-tor-nar

Handwritten musical notation for the piano accompaniment of the second system, consisting of a single line with a bass clef and a 6/8 time signature.

Handwritten musical notation for the third system. The vocal line continues with a treble clef, a key signature of one flat, and a 6/8 time signature. It includes a second ending marked '2o.' with a repeat sign. The piano accompaniment is on a grand staff with a bass clef and a 6/8 time signature.

in li-ber-tà ri-tor-nar in li-ber-tà.

Handwritten musical notation for the piano accompaniment of the third system, consisting of a single line with a bass clef and a 6/8 time signature.

Ma non li- ce e vuole amo-

re che a ser- frit l'alma ser- verri e che ado - ri.

G.



an-che disprezzi d'u-na bar- - ba-ra - bel-tà



d'una bar - - - - - bet-ra bel-tà.



*Del Segno*

Aria del' Opera Semiramis  
del Sig: Venturino.

21

Ecco ri- torna la prima ve- ra. i fieri

tornano al ger- mogli- ar; gl'augelli cantano cantano tranquillo è il mar

*crese:*

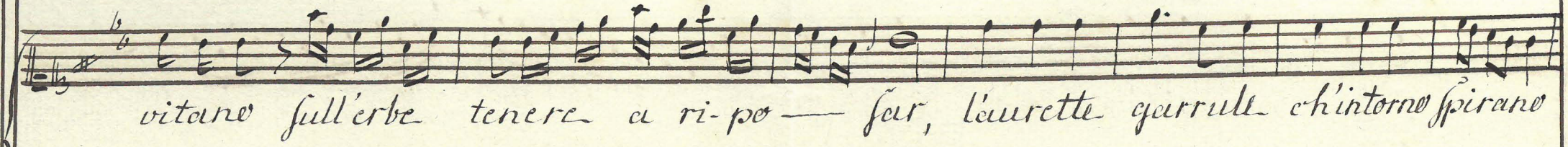
tranquillo è il mar Ecco ri- torna la prima ve ra.

*i fiori tornano a ger-mogliar. L'aurette garrule ch'intorno spirano*

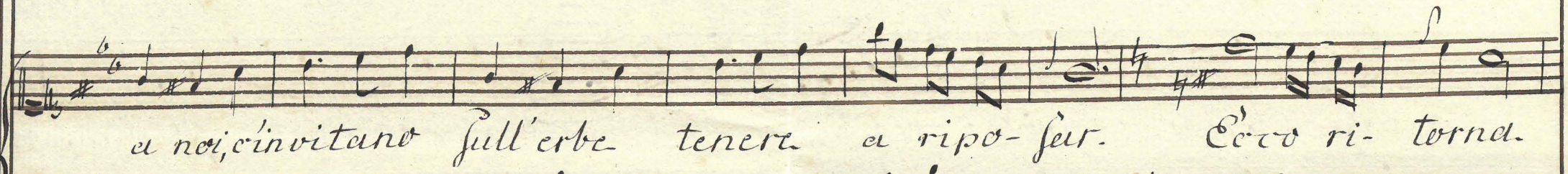
*a noi, c'in-uitano sull'erbe tenere a riposar, l'aurette garrule*

*ch'intorno spirano a noi, c'in-uitano sull'erbe tenere a riposar, a noi, c'in-*

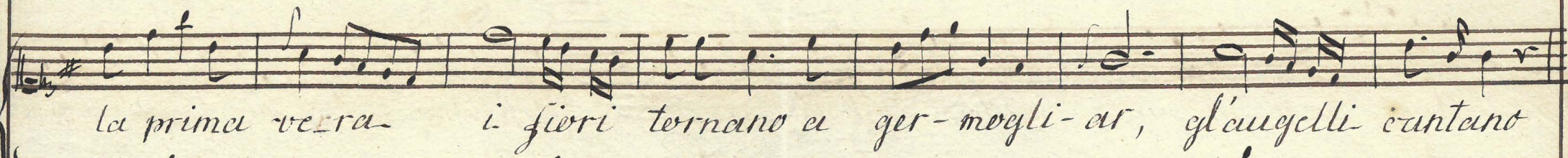




vitano sull'erbe tenere a ri-po — fer, l'aurette garrule ch'intorno spirano

a noi, c'invitano sull'erbe tenere a ri-po-fer. Ecco ri-torna.

la prima verra i fiori tornano a ger-mogli-ar, gl'augelli cantano



crisi:

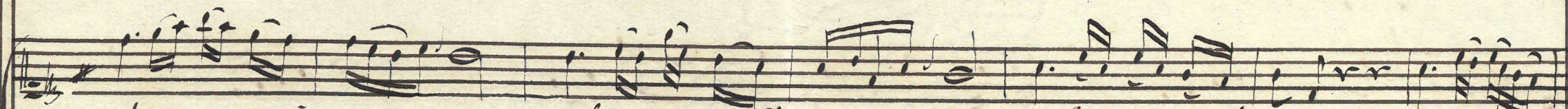
cl.



cantano tranquillo e il mar tranquillo e il mar



Ecco ri-torna la prima verra i fiori tornano a ger-mogliar.



dun-que se m'ami deh vi-e-ni O-ni-ce deh vi-e-ni O-nice me co-se-



l'ère tranquille l'aurea tran-quilla et respi-rat, dum - que se

m'ami deh deh vienì O - ni-ce deh ~ ~ vienì O -

ni - - - ce me - - - co-fe-li - - - ce l'au-

Handwritten musical score for voice and piano. The score is written on two staves. The top staff is for the voice, and the bottom staff is for the piano accompaniment. The music is in G major (one sharp) and 4/4 time. The lyrics are written below the voice staff.

*l'au- ra tran- quillea tran- quillea a. respi- rer.*

The score ends with a decorative flourish on the right side of the top staff.