

No. 13.

Allegro moderato

for.

p

for.

for.

Segue

for.

cres. for.

Segue

for.

fortis.

sp.

sp.

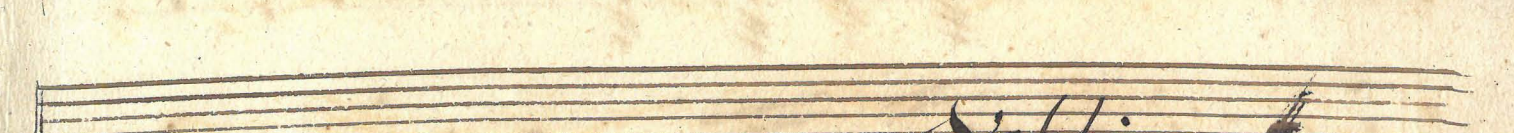
sp.

sp.

sp.

sp.





Volti



No. 14.

*Allo molto*

Handwritten musical score for a piece titled "No. 14" in "Allo molto" tempo. The score consists of 12 staves of music. The key signature has two sharps (F# and C#), and the time signature is common time (C). The notation includes various rhythmic values, including sixteenth and thirty-second notes, and rests. Dynamic markings such as "p.", "pp.", "for.", and "sequ" are used throughout. The manuscript shows signs of age, including some staining and ink bleed-through from the reverse side.



*fortisf:*

*p.* *for.* *p.* *for.*

*Golti. c.c.*



No. 15.

# Allegro molto

Handwritten musical score for a piece titled "Allegro molto". The score is written on ten staves. The first staff is a treble clef with a key signature of one sharp (F#) and a 3/8 time signature. The music is in a single melodic line. The piece concludes with a "Recitativo" section marked "Adagio" and "p." (piano). The final two staves show a cadence with first and second endings marked "1." and "2." respectively, and a "For." (Fine) marking.



Handwritten musical score on a page with ten staves. The first two staves contain musical notation with various dynamics and articulation marks. The third staff has a "3." marking. The fourth and fifth staves have "2." and "1." markings respectively. The sixth through ninth staves are empty. The tenth staff contains the word "Volti." written in a decorative cursive script.

Volti.



No. 10.  
Largho  
pica. for.

Handwritten musical score for the first section of 'Largho'. It consists of ten staves of music. The first staff begins with a treble clef, a key signature of two sharps (F# and C#), and a 3/4 time signature. The music is written in a cursive, handwritten style. Dynamic markings include 'pp.' on the fifth staff and 'for.' on the second, sixth, and seventh staves. A 'Cres.' marking is present on the seventh staff. The section concludes with a double bar line and a repeat sign.

*Allegro.*

Handwritten musical score for the second section of 'Largho'. It consists of three staves of music. The first staff begins with a treble clef, a key signature of two sharps, and a 3/4 time signature. The music is written in a cursive, handwritten style. Dynamic markings include 'for.' on the first and second staves. The section concludes with a double bar line and a repeat sign.

Largho  
Galapo 1 8 80

No. 11.  
Finale  
Alto: modo

Handwritten musical score for the third section of 'Largho'. It consists of three staves of music. The first staff begins with a treble clef, a key signature of two sharps, and a 3/4 time signature. The music is written in a cursive, handwritten style. Dynamic markings include 'for.' on the first, second, and third staves. The section concludes with a double bar line and a repeat sign.



Handwritten musical notation on a single staff, featuring a treble clef, a key signature of one sharp (F#), and a common time signature (C). The notation includes various rhythmic values such as eighth and sixteenth notes, along with rests and dynamic markings.

Handwritten musical notation on two staves. The first staff begins with the instruction *Segue* and includes a *for.* marking. The second staff concludes with a *do* marking.

Handwritten musical notation on a single staff, continuing the piece with various rhythmic patterns and a *do* marking at the end.

Handwritten musical notation on two staves. The first staff starts with a *for.* marking. The second staff ends with a *do* marking.

Handwritten musical notation on a single staff, featuring the instruction *Cres: il for.* followed by *pia:* and a *for.* marking.

Handwritten musical notation on a single staff, continuing the piece with various rhythmic patterns.

Handwritten musical notation on a single staff, continuing the piece with various rhythmic patterns.

Handwritten musical notation on a single staff, continuing the piece with various rhythmic patterns.

Handwritten musical notation on a single staff, continuing the piece with various rhythmic patterns.

Handwritten musical notation on a single staff, continuing the piece with various rhythmic patterns.

Handwritten musical notation on a single staff, concluding the piece with a *fine.* marking and a decorative flourish.



Milton et Elmire.

Violoncello et  
Violone.

---



# Sinfonia Allegro

*f.* *p.* *f.* *p.* *f.* *f.* *p.*

*f.* *p.* *f.* *p.*

*p.* *f.* *p.*

*crec.* *f.*

*p.* *Violoncello* *tutti*

*crec.*

*f. p.* *fo. p.*

*f.* *p.* *f.* *p.* *f.* *f.*

*p.* *f.* *p.*

*p.* *f.* *p.* *Violoncelli*

*Andante tutti*



*Andante.*

Handwritten musical score for the first section, consisting of six staves. The notation includes treble clefs, a 7/8 time signature, and various dynamic markings such as 'f.' and 'p.'. The music features complex rhythmic patterns with many beamed notes and rests.

*Milton*

*Aria 1.*  
*Andante*

Handwritten musical score for the second section, consisting of ten staves. It begins with a treble clef, a 7/8 time signature, and a key signature of one sharp (F#). The notation includes various dynamic markings like 'f.' and 'p.', and features a mix of melodic lines and dense chordal textures.



*Larghetto. Tuet.*  
2. *Nérine et Lucinde*

Musical score for Nérine et Lucinde, measures 1-12. The score consists of two staves. The first staff begins with a treble clef, a 3/8 time signature, and a key signature of one sharp (F#). It contains various musical notations including notes, rests, and dynamic markings such as *p.* and *f.*. The second staff continues the melody with similar notation and dynamics. The tempo marking *Larghetto* is present at the beginning, and *Allegro* appears later in the piece.

Musical score for Elmire, measures 13-14. The score consists of two staves. The first staff begins with a treble clef, a 3/8 time signature, and a key signature of one sharp (F#). It contains various musical notations including notes, rests, and dynamic markings such as *p.* and *f.*. The second staff continues the melody with similar notation and dynamics.

Musical score for Elmire, measures 15-24. The score consists of two staves. The first staff begins with a treble clef, a 3/8 time signature, and a key signature of one sharp (F#). It contains various musical notations including notes, rests, and dynamic markings such as *p.* and *f.*. The second staff continues the melody with similar notation and dynamics. The tempo marking *Larghetto* is present at the beginning of this section.



1. 1. *f. p.* *pp.* *cresc.* *f.* *p.* *f.*

4. *Andante* *Moderato* *Duette. Elmire & Milton* *f.* *p.* *f.* *p.* *cresc.* *f.* *p.* *f.* *cresc.* *f.*



Aria. Bertold

*Andante  
ma non troppo*

No. 9.

*Allegro.*

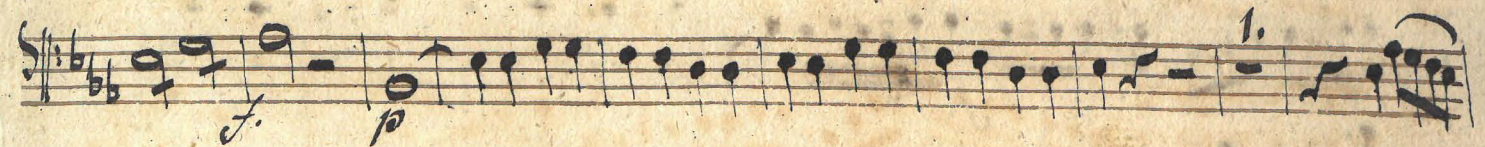
*Violacell.*





Aria G. Milton

Adagio  
Allegro



Voll. Mezzetto



7.  
*Allegretto. Lucinde, Nerine, et Bertold.*





Handwritten musical score for the first section of the piece, consisting of six staves. The notation includes various note values, rests, and dynamic markings such as *f* and *p*. First endings are marked with "1." and repeat signs.

*Aria. 8. Nerine.*

Handwritten musical score for the second section, "Aria. 8. Nerine", consisting of ten staves. It features a variety of musical notations, including a "C" time signature, and tempo markings *Allegro.* and *Andante*. It also includes a *Cadenza* marking and a double bar line at the end.



*Aria. 9. Lucinde*

*Aria. 10.*

*Elmire*

*Da Capo*  
*Dall'segno*

*Andante Allabroce*



A handwritten musical score consisting of 14 staves. The notation includes various rhythmic values such as eighth and sixteenth notes, rests, and dynamic markings like *for.*, *f.*, and *ff.*. There are also first and second endings marked with '1.' and '2.'. The score concludes with a double bar line and a repeat sign on the 14th staff.

Valli Fonceau



II. Rondeau.  
Andante

Elmire, Lucinde, Nerine, Milton, Bertold.

This page contains a handwritten musical score for a Rondeau, marked "Andante". The score is written on 18 staves, all in a minor key (indicated by one flat in the key signature). The music is characterized by frequent sixteenth-note passages and dynamic markings such as *p*, *pp*, *f*, and *sfz*. There are several first endings marked with "1." and some sections marked with "Voz." and "X.". The notation includes various rhythmic values, including eighth and sixteenth notes, and rests. The paper shows signs of age, with some staining and wear along the edges.



Handwritten musical score on aged paper, featuring ten staves of music. The notation includes various rhythmic values, accidentals, and dynamic markings. The tempo and performance style are indicated by the text *Allegro. Recit. 1.* written across the third staff. The score concludes with a double bar line and the word *fin* on the tenth staff. The paper shows signs of age, including yellowing and some foxing.

*Allegro. Recit. 1.*

*fin*

Five empty musical staves at the bottom of the page, consisting of five horizontal lines each, with no notation or markings.



12) Allegro Milton

Handwritten musical score for 'Allegro Milton'. The score consists of 12 staves of music. The first staff begins with a treble clef, a common time signature (C), and a key signature of one flat (B-flat). The music is written in a style characteristic of the 18th or 19th century. The notation includes various note values, rests, and dynamic markings such as *cresc.*, *f.*, and *p.*. The piece concludes with a double bar line and repeat dots.

Allegro. 13.

Handwritten musical score for 'Allegro. 13.'. The score consists of three staves of music. The first staff begins with a treble clef, a 3/4 time signature, and a key signature of one flat (B-flat). The music is written in a style characteristic of the 18th or 19th century. The notation includes various note values, rests, and dynamic markings such as *f.*, *p.*, and *ff.*. The piece concludes with a double bar line and repeat dots.



Handwritten musical score for the first system, consisting of ten staves. The notation includes various rhythmic values, dynamic markings such as 'f.' and 'p', and articulation marks like slurs and accents.

*M. Moderato*  
*Andante*

*Kraftig*

Handwritten musical score for the second system, consisting of ten staves. The notation continues with various rhythmic patterns and dynamic markings, including 'poco f.'

*Volti Quartet.*



15.

Elmire, Lucinde, Nerine. Berdold.

Quartett

*Allegro non molto.*

Musical score for the first section, *Allegro non molto*. It consists of 12 staves of music in 3/4 time with a key signature of one flat. The notation includes various rhythmic values and articulation marks.

*Recit. Adagio*

Musical score for the second section, *Recit. Adagio*. It consists of 12 staves of music in 2/4 time with a key signature of two sharps. The notation includes various rhythmic values and articulation marks such as *f. con arco*, *pizz.*, *pizzicato*, and *arco*.

*Attaca subito*

*Largo*



16.  
*Largo*

*piano*

*f.* *p.* *f.* *p.* *f.* *p.* *f.* *p.* *f.* *p.*

*Allegro.*

*Tutti Allegro Moderato*



17.)

Finale

*Allegro*

*Moderato.*

Handwritten musical score for Finale, page 17. The score consists of 18 staves of music in G major, 2/4 time. It features various dynamics including piano (p), forte (f), and poco forte (poco. f). The notation includes treble and bass clefs, key signatures, and time signatures.



Handwritten musical notation on two staves. The top staff begins with a treble clef and a key signature of one sharp (F#). The music consists of several measures of notes, including eighth and sixteenth notes, and rests. The bottom staff continues the melody with similar note values and rests. The notation is written in dark ink on aged, yellowed paper.

