

SANTONIA Ex Dur.

<sup>a.</sup>  
s stromenti.

Violino Primo.

Violino Secondo.

Flauto Primo.

Flauto Secondo.

Corno Primo.

Corno Secondo.

Viola.

et.  
Basso.

Composée de S. A. Madame la P. W. de  
Saxe C. M.



Andante

Violino Primo.

Menuet.

Trio.

Menuet Da Capo.



*Presto.*

Handwritten musical score for a piece marked *Presto.* The score consists of ten staves of music, likely for a single instrument or voice. The key signature is G major (one sharp). The notation includes various rhythmic values, including eighth and sixteenth notes, and rests. Dynamic markings are present throughout: *p* (piano) appears on the 7th, 8th, and 10th staves; *f* (forte) appears on the 6th and 9th staves; and *pia* (pianissimo) appears on the 2nd staff. The piece concludes with a double bar line and a fermata on the 10th staff.



*Con Violino Secondo.*



*Andante.*

*Violino Secondo.*

Handwritten musical score for Violino Secondo, Andante section. The score consists of five staves. The first staff begins with a treble clef, a key signature of one sharp (F#), and a 3/4 time signature. The tempo marking "Andante" is written above the first staff. The music features a melodic line with various note values and rests, and a bass line with chords and single notes. The second staff contains a large slur over a series of notes. The third staff has a dynamic marking "p." (piano) and an "A" marking. The fourth and fifth staves continue the melodic and harmonic development, ending with a double bar line.

*Menuet.*

*pia*

Handwritten musical score for Menuet section. The score consists of three staves. The first staff begins with a treble clef, a key signature of one sharp (F#), and a 3/4 time signature. The tempo marking "Menuet" is written above the first staff. The music is characterized by a steady, rhythmic pattern. The second staff has an "A" marking. The third staff concludes the piece with a double bar line.

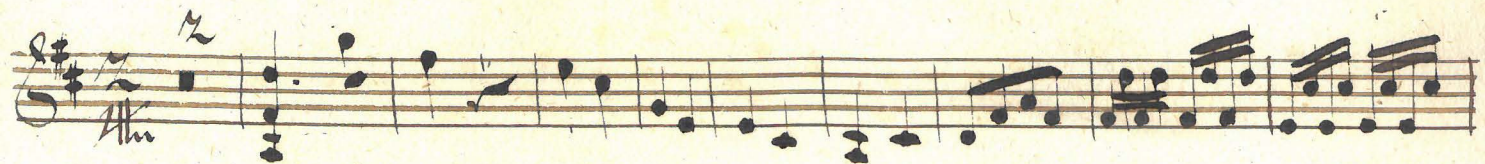
*Trio. Sempre Piano.*

Handwritten musical score for Trio section. The score consists of two staves. The first staff begins with a treble clef, a key signature of one sharp (F#), and a 3/4 time signature. The tempo marking "Trio. Sempre Piano." is written above the first staff. The music features a melodic line with a large slur and a dynamic marking "bis". The second staff continues the melodic line, also featuring a large slur and a dynamic marking "bis". The piece concludes with a double bar line.

*Menuet Da Capo.*



# Presto.





Andante.

Viola.

Handwritten musical score for Viola, Andante tempo. The score consists of five staves of music in G major and 3/4 time. The first staff begins with a treble clef, a key signature of one sharp (F#), and a 3/4 time signature. The music is written in a cursive hand with various note values and rests. The fifth staff ends with a double bar line.

Menuet.

Handwritten musical score for Menuet. The score consists of three staves of music in G major and 3/4 time. The first staff begins with a treble clef, a key signature of one sharp (F#), and a 3/4 time signature. The music is written in a cursive hand with various note values and rests. The third staff ends with a double bar line.

Trio.

Handwritten musical score for Trio. The score consists of two staves of music in G major and 3/4 time. The first staff begins with a treble clef, a key signature of one sharp (F#), and a 3/4 time signature. The music is written in a cursive hand with various note values and rests. The second staff features a "bis" marking above a bracketed section of notes. The second staff ends with a double bar line.

Menuet Da Capo.



*Presto.*





Basfo.



*Andante. Basso.*

*Menuet.*

*Trio.*

*Menuet Da Capo.*



# Presto.





*Andante. Flauto Primo.*

Handwritten musical notation for the first system, consisting of five staves. The notation includes various notes, rests, and dynamic markings such as 'ff' and 'p'.

*Menuet Tacet*

*Trio.*

Handwritten musical notation for the second system, consisting of three staves. The notation includes various notes and rests.

Handwritten musical notation for the third system, consisting of three staves. The notation includes various notes and rests.

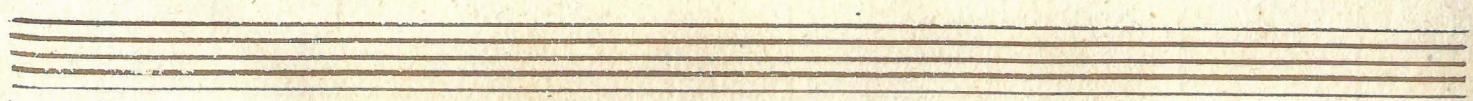
*Menuet Da Capo Tacet.*





*Presto.*

Handwritten musical score for a piece titled "Presto." The score is written on ten staves of music. The key signature is G major (one sharp) and the time signature is 2/4. The notation includes various rhythmic values, accidentals, and dynamic markings such as "Alto" and "f". The piece concludes with a double bar line and a fermata on the final note of the tenth staff.





*Andante. Flauto Secondo.*

*Musical staves with the text 'Mennet tacet.'*

*Trio*

*Musical staves with the text 'Mennet Dasapo Tacet.'*



# Presto.

Handwritten musical score for a piece titled "Presto." The score consists of ten staves of music. The first staff begins with a treble clef, a key signature of one sharp (F#), and a 2/4 time signature. The tempo marking "Presto." is written above the first staff. The music is written in a cursive hand and includes various note values, rests, and dynamic markings such as "Alu" and "t.". The score concludes with a double bar line and a fermata on the final note of the tenth staff.





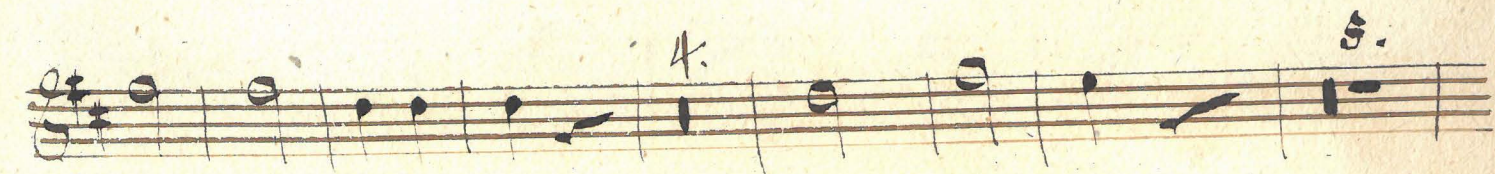
*Andante Tacet.*

*Cornu Primo.*

*Men:*



*Presto*





*Andante Tacet.*

*Corno Secondo.*

*Alleg.*



*Presto.*

