

Philipps



Universität  
Marburg

# Support for Doctoral Candidates and Postdocs at MARA



**Dr. Ines Braune, Dr. Karin Awe,  
Dr. Christine Berger, Dr. Jan-Paul Klünder**  
Marburg, March 21, 2023

# Content

- What is MARA?
- MARA's workshop program
- Funding
- Consultation services
- Networking
- Further contacts at Philipps-Universität Marburg



MARburg University Research Academy (MARA) offers a wide range of support to junior scholars from the beginning of their doctorate to establishing their careers in an academic or non-academic field.



## Events

- ▶ Research practice
- ▶ Academic writing
- ▶ Academic communication
- ▶ Leadership and management
- ▶ Career planning and international issues
- ▶ Third-party funding and knowledge transfer



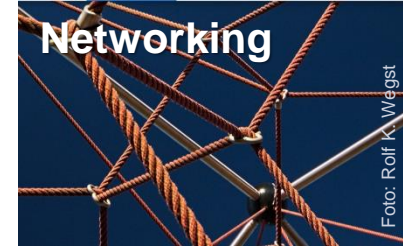
## Funding opportunities

- ▶ Doctoral scholarships
- ▶ Travel assistance
- ▶ Conference funding
- ▶ Equal opportunity: completion scholarships and bridging positions



## Consultation

- ▶ Individual consultation by MARA employees
- ▶ Coaching for advanced doctoral candidates and postdocs



## Networking

- ▶ Academic groups, e.g. working groups of doctoral candidates
- ▶ Workshops: interdisciplinary dialogue
- ▶ Scientist's Day

[www.uni-marburg.de/en/mara](http://www.uni-marburg.de/en/mara)

# MARA Membership



**Doctoral candidates** Regardless of whether you are doing your doctorate with a scholarship, on a state or third-party-funded position, or part-time at Philipps-Universität Marburg, you are entitled to a membership at MARA.

- Required is the registration as a doctoral candidate in [MARVIN](#) and the approval of your self-registration by your department.

**Postdocs** If you are doing postdoctoral research at Philipps-Universität Marburg, then you are automatically a member of MARA.

- You count as a postdoc if you already hold your doctoral degree and have an employment contract at Philipps-Universität Marburg.

<https://www.uni-marburg.de/en/mara/institution/membership>

# MARA Membership

DEUTSCH



## Marburg University Research Academy – Members Area

### Your Registration in the MARA database

In order to use the offers of MARA, please register once in our database with your personal data. Please fill out the form as completely as possible. Note that the fields marked with (\*) are mandatory.

#### Formular

##### Personal information

Title

First name (\*)

Surname (\*)

E-mail (preferred) (\*)

Gender (\*)

- Male  
 Female  
 Divers

What is your nationality?

- German  
 Other

We use this information to specifically address international members

## Registration in the MARA database

- Use our services
- Get information on events and funding opportunities via e-mail distribution list

<https://www.tzm-marburg.de/mara-registrierung/antrag.cfm?lang=en>

# MARA Workshop Program

Visit our [Calendar of Events](#)

## Format

Online & in person

## Language

German & English

## Costs

Members: 25 EUR/ course day

External: 75 EUR/ course day

Half-day courses free of charge

<a href="#">Graphical Abstracts – Visualizing Science!</a> Online event Registration until March 2, 2023	17.03.2023 31.03.2023	9:00–17:00 9:00–17:00	D   P   L	English
<a href="#">Familie UND wissenschaftliche Karriere meistern</a> Online event Registration until March 6, 2023	20.03.2023 21.03.2023	9:00–16:00	D   P   A	German
<a href="#">MARA Informational Event for Doctoral Candidates and Postdocs</a> Online event Registration not necessary	21.03.2023	10:00–11:00	D   P   A	English
<a href="#">Karriereentwicklung für Postdocs – Betreuung von Promotionen: Rechtliche Grundlagen, Good Practices und Rollenmanagement</a> Online event Registration until March 8, 2023	23.03.2023 24.03.2023	9:00–14:00 9:00–14:00	P   A	German



# Program for Doctoral Candidates

**Non-academic career**

**Academic career**

**Completion of doctorate**

**Support offers during doctorate**

**Preparation for doctoral studies**

**Contact** Dr. Karin Awe [karin.awe@uni-marburg.de](mailto:karin.awe@uni-marburg.de)

# Program for Doctoral Candidates

## Research Practice

R, Python, Good Scientific Practice, Research Data Management

## Academic Writing

Writing Lab

## Academic Communication

Presenting at Conferences, How to Design Scientific Figures, Graphical Abstracts, Thesis-Defense Training

## Leadership and Management

Project Management, Networking, Time- and Self Management

## Career Planning and International Issues

Get That Job!



# Program for Doctoral Candidates – Writing Lab

## Writing module

- Compact workshops
- Half-day workshops
- English academic writing
- Online writing retreat
- Exposé

## Publishing module

- Publication process
- Writing for English-language publications

## Individual writing consultation (in German only)

# Program for Doctoral Candidates – Getting Started

## ***Getting Started* for Doctoral Candidates from Abroad**

Workshops for doctoral candidates from abroad in cooperation with the International Office (Dep. VI):

Getting Started – For Doctoral Candidates from Abroad (24./25.11.2023)

Getting Started – different topics each year [Crafting Your Research \(30.06.2023\)](#)

Language Center: 1–2 [German courses](#) beginner level/semester

**Costs** Free of charge (DAAD financial assistance via STIBET)

**Contact** MARA, Dr. Karin Awe  
Language Center, Dr. Susanne Duxa

# Postdoctoral Program of MARA



## Certificate program EMF

Acquisition of competences for the acquisition and implementation of third-party funded projects



## Communicating Academic Content

Bringing topics from your research to the public or a broader scientific community



## Career Development for Postdocs

Support on the way to a professorship and in the decision-making process

## Other events

Further competences and career goals

**Contact** Dr. Christine Berger [christine.berger@uni-marburg.de](mailto:christine.berger@uni-marburg.de)

**Certificate program** on the acquisition of competences for the development, application and management of third-party-funded projects

Module 1:  
Project Design  
and Project  
Application



Module 2:  
Project  
Management



Module 3:  
Presentation of  
Third-Party-  
Funded Projects



Module 4:  
Transfer



Joint project with Universität Kassel

**For** doctoral candidates & postdocs (planning of application for funding)

**Costs** Registration fee 200 EUR + ~ 350 EUR for workshops

**Highlight** Reviewers Session & Acquisition of certificate

<https://www.uni-marburg.de/en/mara/emf>

# Program Communicating Academic Content

## Workshops

- The Basics of Science Communication
- Presenting Science to a (non-)academic Audience
- Media and interview training
- Social Media
- Science Slam

## Summer Schools

## Coaching

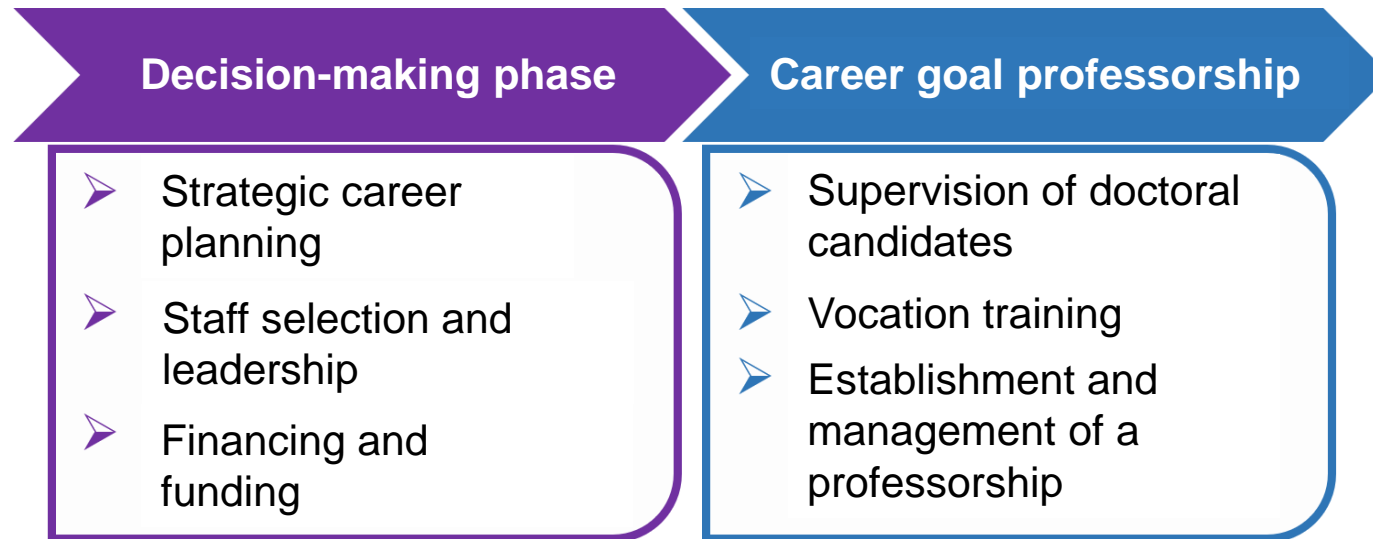


[www.uni-marburg.de/en/mara/wisskomm](http://www.uni-marburg.de/en/mara/wisskomm)



# Career Development for Postdocs

The program supports on the path to a professorship



Joint project with Justus-Liebig-Universität Gießen

[www.uni-marburg.de/en/mara/kfp](http://www.uni-marburg.de/en/mara/kfp)



# Postdoctoral program: Further offers

## Workshops on (always) current topics

### **Academic Writing**

Scientific Reviews

### **Leadership and Management**

Academic Fixed-Term Contract Act, Diversity Literacy, Committee Work

### **Career Planning and International Issues**

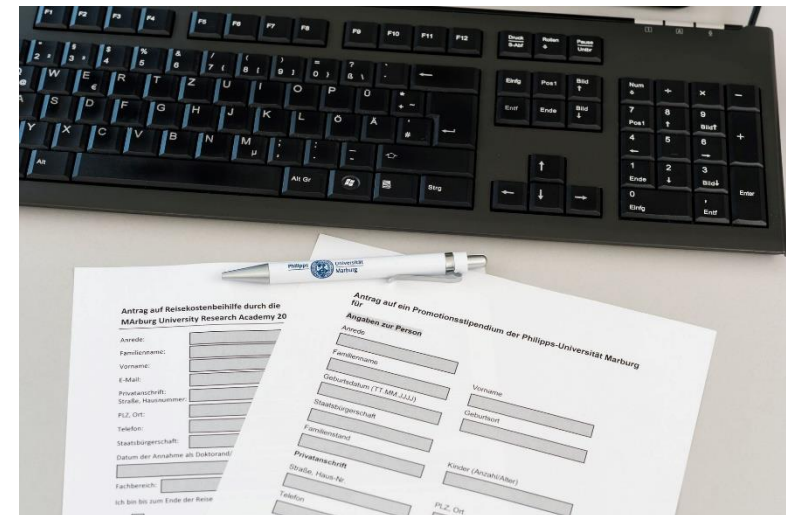
Career in Science Management and Administration

### **Third-party Funding and Knowledge Transfer**

Start-up workshop

# Funding Opportunities

- Doctoral scholarships
- Travel Assistance
- Conference Funding
- Equal Opportunity



**Contact** Dr. Jan-Paul Klünder

<https://www.uni-marburg.de/en/mara/funding>

# Doctoral Scholarships

- **Two full scholarships** annually, alternating between humanities & social sciences, and life & natural sciences
- Junior scholars **with especially high qualifications** who want to pursue their dissertation at Marburg Univ.
- **1,300 EUR** + 103 EUR materials allowance, 400 EUR child allow. (1 child, additional children 100 EUR each)
- **3 years** total, as a rule initially for 2 years
- **Requirements:** Enrollment at a department of Philipps-Universität Marburg, performance criteria
- **Call for applications** in July
- **Funding commences** in January of the following year

# Travel Assistance for Doctoral Candidates and Postdocs

- Travel expenses/overnight stays/misc. costs
- **No** meal expenses/literature/travel to Germany
- For dissertation/research relevant travel

## International travel

Travel to conferences (only for contributors)  
Travel for academic collaboration with scientists  
Field research (archive, library, monuments, etc.)

## Domestic travel

Travel to national conferences (usually only if applicant is presenting)  
Travel to international conferences (only if applicant is contributing)  
Field research (archive, library, monuments, etc.)

- **Amount:** Per actual costs, up to 2,000 EUR, 1,500 EUR/trip
- **Timing:** Call for applications usually twice a year

# Conference Funding

- For **organizing conferences** (conference-related costs, except for meal expenses, publishing costs, and fees for speakers from Marburg University)
- **No** meal costs, printing costs for publications and internal fees
- Up to **1,000 EUR** + 250 EUR childcare, per actual costs and available funds
- **Requirements:** For the purpose of funding Marburg doctoral candidates, public events
- Applications all year, at least **3 months** prior to conference

# Equal Opportunity

- **Full scholarships** for completion of dissertation projects (doctoral candidates) and habilitations (postdocs) for **6 months**
- **Outstanding female junior scholars**
  - Doc. cand. = 1,300 EUR (med. 670 EUR) + child allow,
  - Postdocs = 1,750 EUR + 103 EUR mat. + child allow,
- **Requirements:** Exceptional acad. quality, involvement in UMR, beginning in the current year
- **Call for applications** in Spring



# Consultation Services

- Individual consultation
- Coaching by external trainers
- Peer consultation
- Mentoring



## Contact

[www.uni-marburg.de/en/mara/consultation-services](http://www.uni-marburg.de/en/mara/consultation-services)

# Individual Consultation

Personal one-on-one consultation on various subjects:

- Doctorate, yes or no?
- Financing your doctorate/postdoc phase
- MARA funding
- Career paths
- Skill acquisition
- Challenges and conflicts

## Contact

Doctoral candidates (GSW)

Dr. Ines Braune

Doctoral candidates (LNW)

Dr. Karin Awe

Postdocs

Dr. Christine Berger, Dr. Ines Braune

MARA funding

Dr. Jan-Paul Klünder

[www.uni-marburg.de/en/mara/consultation-services/individual-consultation](http://www.uni-marburg.de/en/mara/consultation-services/individual-consultation)

# Peer Consultation

## What is Peer Consultation?

- Consultation of a self-organized group with fixed roles and procedures

MARA will cover the costs for a coach to introduce a group of PhD students and postdocs of Philipps-Universität Marburg to peer consultation.

**Contact** Dr. Christine Berger

[www.uni-marburg.de/en/mara/consultation-services/collegial-consultation](http://www.uni-marburg.de/en/mara/consultation-services/collegial-consultation)

# Mentoring programs

Mentoring programs with the University of Giessen for postdocs

[www.uni-marburg.de/en/mara/consultation-services/pcmo-mentoring](http://www.uni-marburg.de/en/mara/consultation-services/pcmo-mentoring)

**Contact** Dr. Ines Braune [ines.braune@uni-marburg.de](mailto:ines.braune@uni-marburg.de)

Mentoring Hessen: [www.mentoringhessen.de](http://www.mentoringhessen.de)

- **ProCareer.MINT** addresses female students of the MINT subjects
- **ProCareer.DOC** for female doctoral candidates and postdocs of all disciplines at an early stage
- **ProAcademia** supports female postdocs who have already decided to go into science
- **ProProfessor** specific support for female postdocs on the path to a professorship

**Contact** Stefanie Wittich [stefanie.wittich@verwaltung.uni-marburg.de](mailto:stefanie.wittich@verwaltung.uni-marburg.de)

# Networking

- Academic groups
- Scientist's Day
- Phd and Postdoc Meeting



**Contact** Dr. Ines Braune

[www.uni-marburg.de/en/mara/networking](http://www.uni-marburg.de/en/mara/networking)

**Self-organized interdisciplinary working groups** under the umbrella of MARA with the following goals:

- Research-specific networking
- Interdisciplinary discussion of self-chosen topics
- Support of different formats

MARA makes their activities visible, supports with rooms, advertising and conference sponsorship

**Informal application** at any time to Dr. Ines Braune, Managing Director  
[www.uni-marburg.de/en/mara/networking/academic-groups](http://www.uni-marburg.de/en/mara/networking/academic-groups)



# Scientist's Day

Annual information and networking day for early career researcher

- **2021:** Good Scientific Practice
- **2022:** Communicating Academic Content
- **2023:** Internationalization of career planning

**06.06.2023**

Organized by:

Vice President for Equal Opportunities and Career Development, Prof. Dr. Sabine Pankuweit, Department of Early Stage Researchers and MARA

[www.uni-marburg.de/en/mara/networking](http://www.uni-marburg.de/en/mara/networking)

# PhD and Postdoc Meeting



Annual university-wide information and networking day for early career researcher

- **2022:** Communicating Academic Content
- **2023:** Internationalization of career planning

**07.11.2023**

Organized by:

Vice President for Equal Opportunities and Career Development, Prof. Dr. Sabine Pankuweit, Department of Early Stage Researchers and MARA

[www.uni-marburg.de/en/mara/networking](http://www.uni-marburg.de/en/mara/networking)

# Further Contacts at Philipps-Universität



- Creative Space
- Representation of Doctoral Candidates
- Further Contact Points

Philipps



Universität  
Marburg

# XSpaces: Creative Space



## Makerspace:

The Makerspace is used for teaching and research as well as for start-up promotion. The capture of 3-D data and subsequent printing are just as possible as practical work with tools for the creation of prototypes.

mailto: service@mafex.de

## Game Lab:

The Game Lab offers game consoles (PS5, Xbox, Switch) and powerful workstations (Blender, Unity, etc.) as well as a VR area (HTC Vive, Pico Neo 3), augmented reality headsets and a stationary VR treadmill to work on computer and video games, virtual reality apps and serious games and evaluate them for use in research and teaching.

mailto: medienzentrum@ub.uni-marburg.de

## Open Lab:

In the Open Lab, there is a 3D scanner and 3D printer to produce 3D scans of real objects or illustrative objects, model figures or technical prototypes. Collaborative digital work is also supported by an interactive touchscreen desk.

mailto: medienzentrum@ub.uni-marburg.de

# Creative Space

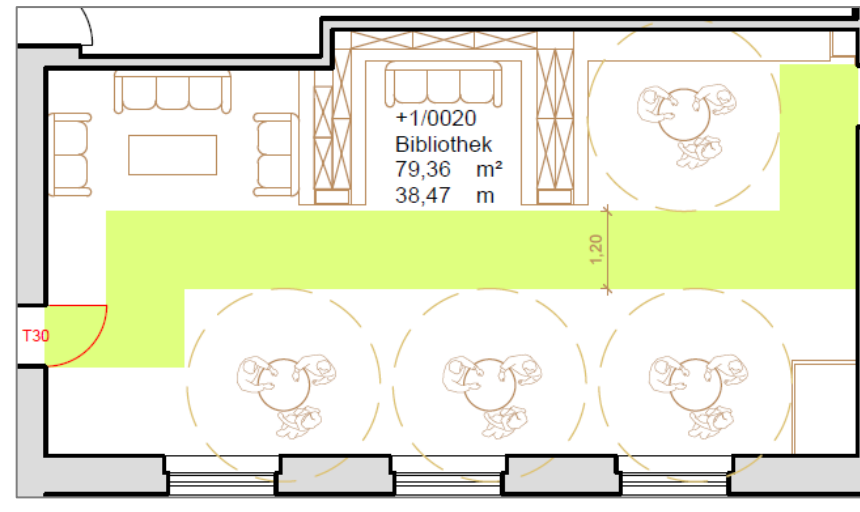
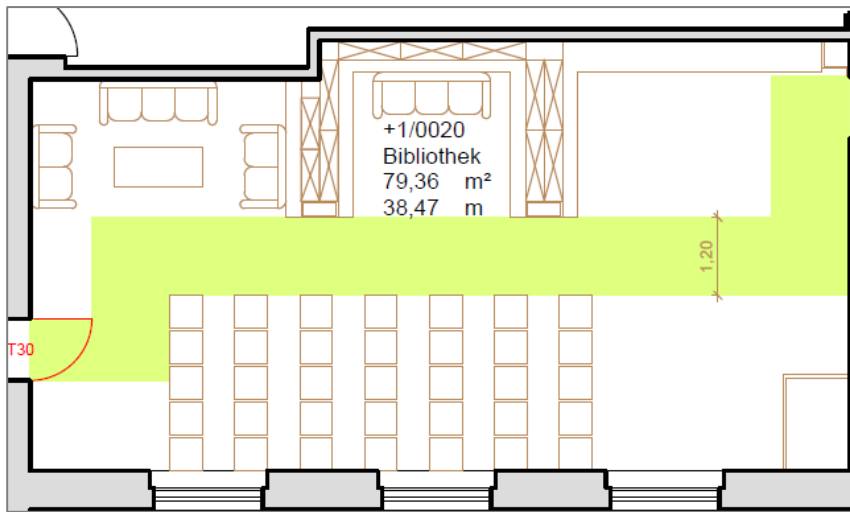
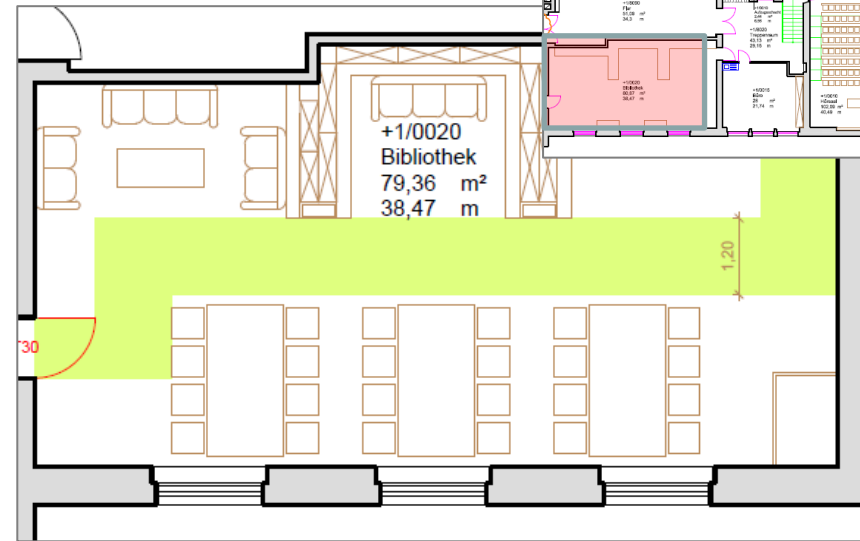
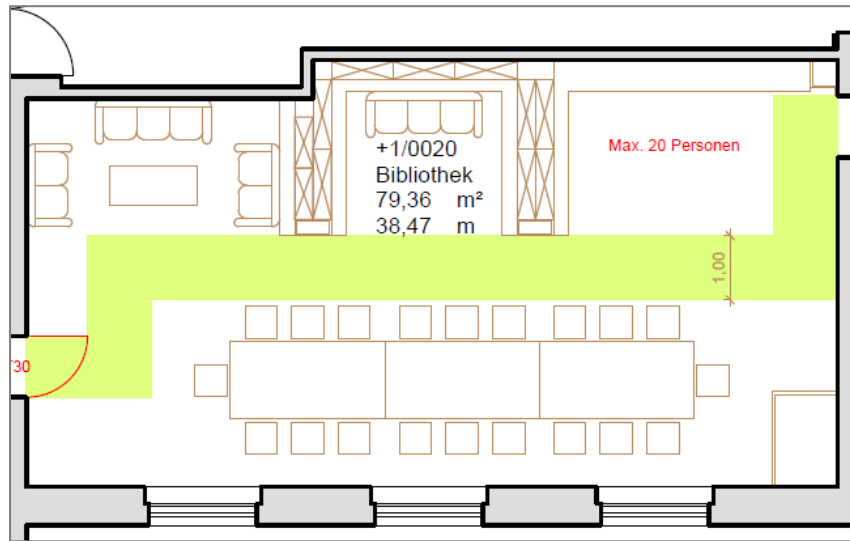
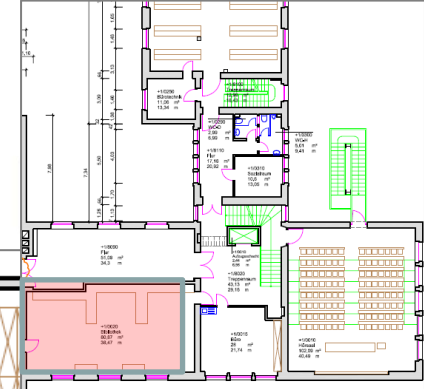
*A place for brainstorming. A space for networking, exchange and project development. A place to talk to each other and get things going together. An event space.*

The Creative Space offers (from summer 2023):

- an innovative and stimulating working environment
- the best possible infrastructure for creative collaboration
- Funding for initiatives by young academics and interdisciplinary projects
- Invitation of guest researchers
- Conducting of conferences / workshops / lectures etc.

[mailto: creative-space@uni-marburg.de](mailto:creative-space@uni-marburg.de)

# Creative Space



# Representation of Doctoral Candidates

The elected doctoral candidates' representation of the Philipps-Universität Marburg organizes activities of doctoral candidates at Philipps-Universität Marburg, among others

- Meeting of doctoral candidates
- Regular's table
- Colloquium
- Reader's meeting
- Dr. Sport

## **Email distribution list and contact**

[www.uni-marburg.de/de/forschung/talente/promovieren-in-marburg/wir-promovierenden-unter-uns/promovierendenvertretung](http://www.uni-marburg.de/de/forschung/talente/promovieren-in-marburg/wir-promovierenden-unter-uns/promovierendenvertretung)



# Further Interesting Contacts at Philipps-Universität

- [Instruction Development and Teaching in Higher Education](#) (Hochschuldidaktik)
- [International Office](#)
- [Referat für Wissenschaftlichen Nachwuchs](#)
- [Equal Opportunities Office](#)
- [Language Center](#)
- [Human Resource Development](#) (Personalentwicklung)



**Thank you for your attention!**

**Managing Director**

at MARA

Dr. Ines Braune

[ines.braune@uni-marburg.de](mailto:ines.braune@uni-marburg.de)

**Funding Opportunities**

at MARA

Dr. Jan-Paul Klünder

[jan-paul.kluender@uni-marburg.de](mailto:jan-paul.kluender@uni-marburg.de)

**Program for Doctoral Candidates**

at MARA

Dr. Karin Awe

[karin.awe@uni-marburg.de](mailto:karin.awe@uni-marburg.de)

**Postdoctoral Program**

at MARA

Dr. Christine Berger

[christine.berger@uni-marburg.de](mailto:christine.berger@uni-marburg.de)

[www.uni-marburg.de/en/mara](http://www.uni-marburg.de/en/mara)